

eva

scoutr

# An extra pair of eyes in your greenhouse.

## Scouting made simple

EVA converts crop images into clear, actionable insights. Detect pests and diseases with precision, visualize crop health in intuitive dashboards, and make data-driven decisions for more sustainable cultivation.

### Autonomous operation

Covers up to 4.5 hectare in 22 hours, day & night.

### Greenhouse-wide crop visibility

Monitor over 80% of your greenhouse using five strategically placed cameras.

### Fast & easy deployment

With minimal disruption to operations.

### Detecting the majority of pests & diseases

To support early intervention and prevent spread.

### Advanced safety & obstacle detection

Ensures seamless integration with existing greenhouse logistics and workflows.



INNOVATION BY





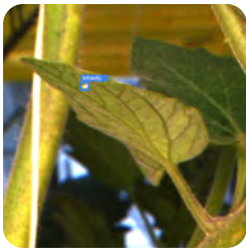
# eva

VISCON AGROBOTICS

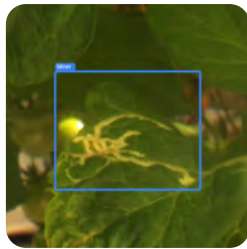
## Early pest detection clearly mapped

Growers access EVA's insights through an intuitive dashboard featuring real-time crop health maps, historical trend analysis, and comprehensive weekly reports with year-over-year comparisons.

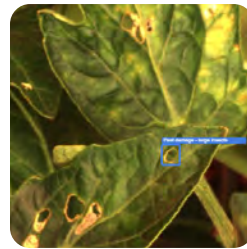
EVA currently detects a wide range of pests, diseases, and crop health issues, with new detections continuously being developed and added.



White fly



Leaf miner damage



Caterpillar damage



Macrolophus



Nutrient issues



Nesidiocoris tenuis



Nesidiocoris tenuis  
damage



Curious? Scan to learn  
more about EVA

 **scoutr**

Visit [viscon.eu](https://viscon.eu) and join the greenhouse revolution. Discover how EVA can support your operations, and help shape the future of autonomous growing solutions together.

Mijlweg 18  
3295 KH s-Gravendeel  
The Netherlands

T + 31 (0) 78 673 9898  
E [info@viscon.eu](mailto:info@viscon.eu)  
[www.viscon.eu](https://www.viscon.eu)

 **VISCON  
GROUP**